



昌恒智能 海关智能查验系统

CHANGHENG INTELLIGENT
CUSTOMS INTELLIGENT INSPECTION
SYSTEM



广东昌恒智能科技有限公司

Guangdong Changheng Intelligent Technology Co., Ltd.

地址：东莞市长安镇新安社区利成路 16 号
Address: No. 16, Licheng Road, Xin'an Community,
Chang'an Town, Dongguan City.
Tel: 0769-85423968 Fax: 0769-85390158
<http://www.gdchim.com>

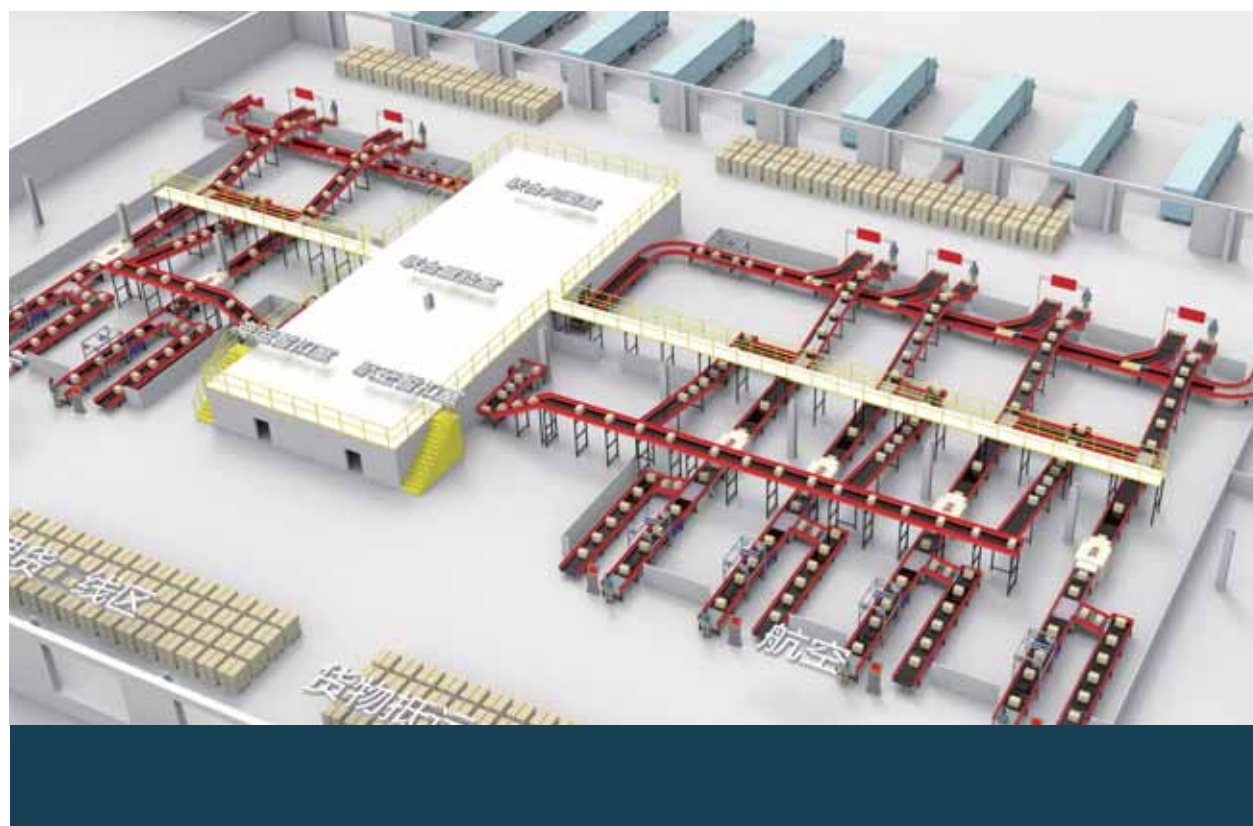
售后服务
400-115-2588



广东昌恒智能科技有限公司
Guangdong Changheng Intelligent Technology Co., Ltd.

跨境电商智能安检 通关平台优质供应商

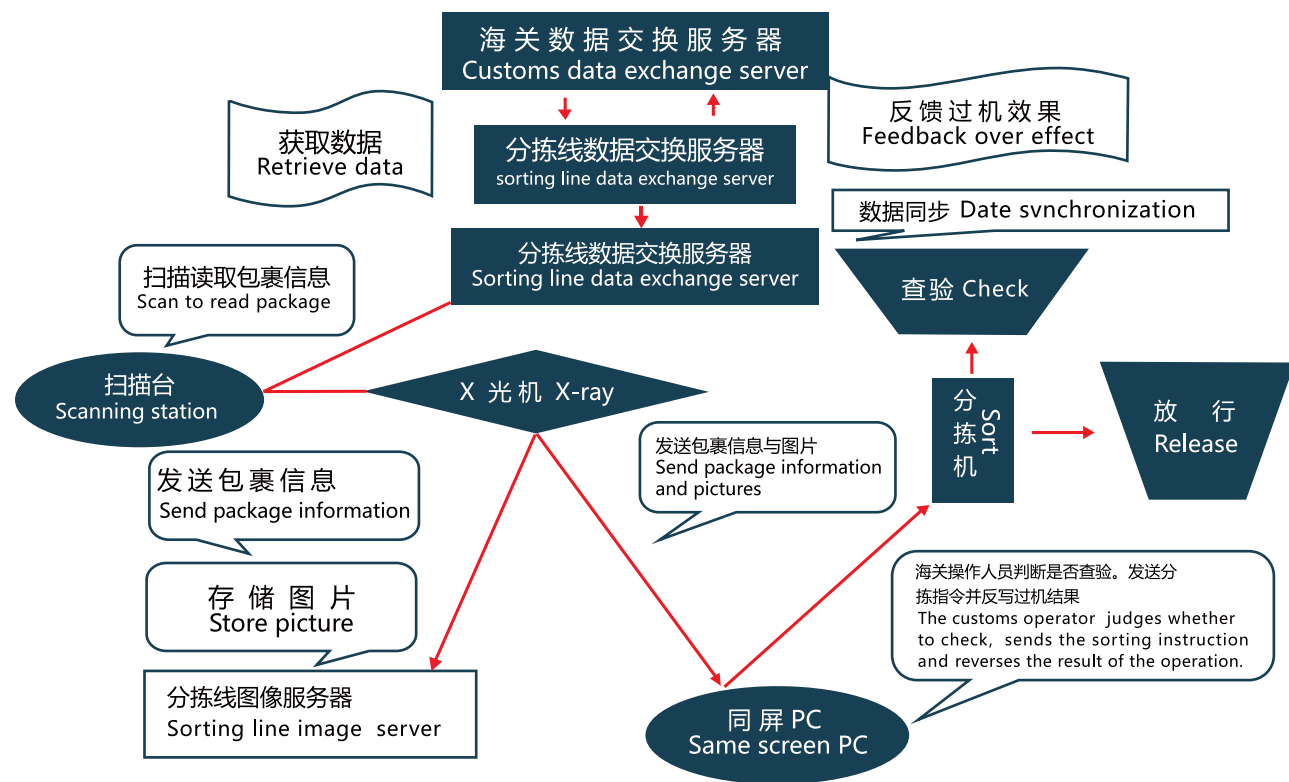
Cross-border e-commerce intelligent security,
customs clearance platform quality suppliers



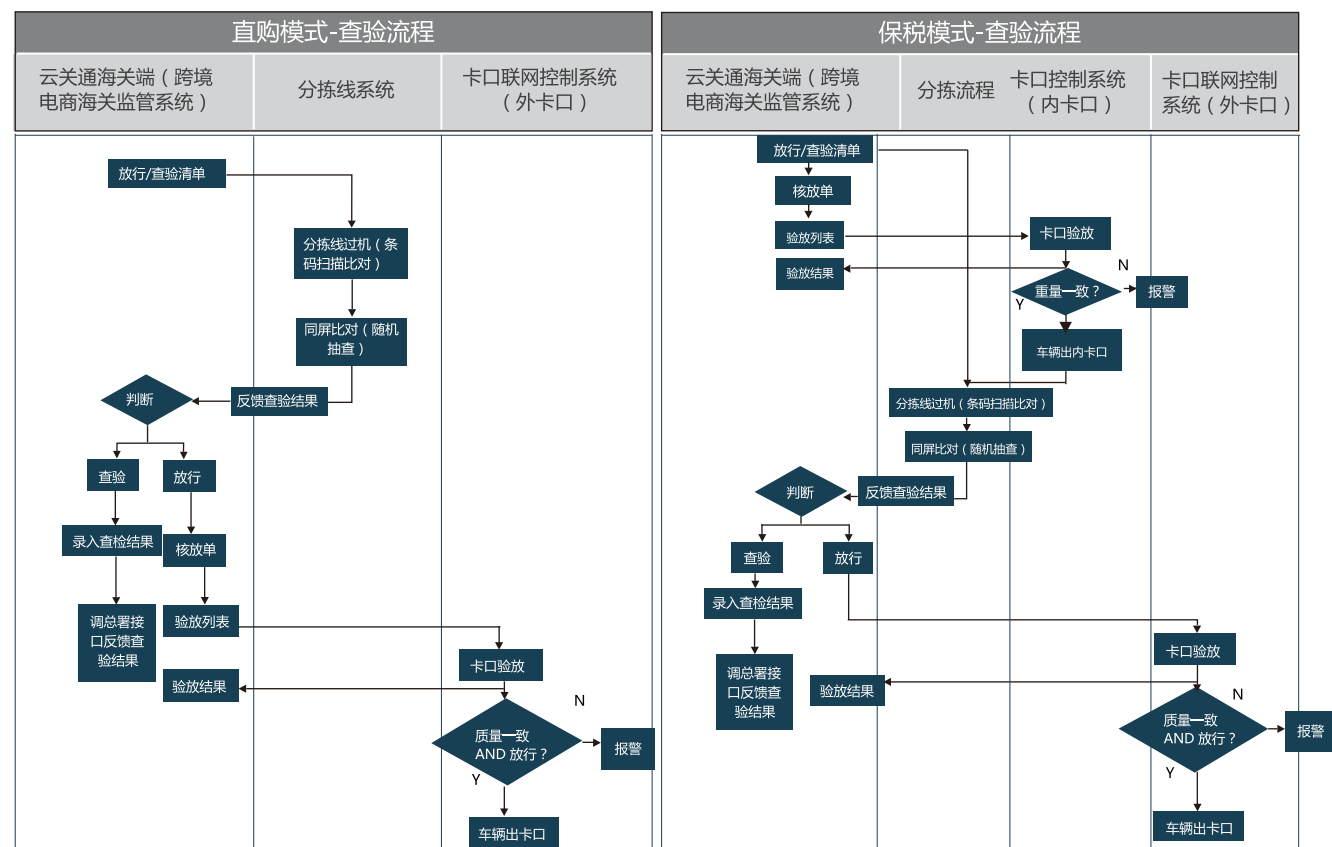
电子商务是目前全球成长性最佳的热点行业之一，已成为全球贸易发展的主要业态，将成为未来国际贸易的主导趋势。据商务部、海关总署等部门统计，2016年我国跨境电商的交易规模为6.7万亿元，同比增长24.1%，2012-2016年CAGR达33.6%。2017年-2020年，预计跨境电商行业还将保持15.7%的年均复合增速，2020年将达到12万亿的规模。跨境电商的成长主要来自对于传统贸易市场的替代，从交易额占进出口贸易比例来看，我国跨境电商渗透率逐年攀升，从2008年的4%上升至2016年的27.5%，预计到2020年将达到37.6%。跨境贸易电子商务改变了原来只有具备进出口资质的生产企业和外贸企业才能从事的传统国际贸易方式，对传统商贸模式和消费方式带来了巨大影响，在经济社会发展中的地位 and 作用日益凸显，因此在短短的几年时间内得以飞速发展。

E-commerce is one of the best hotspots in the world for global growth. It has become the main format of global trade development and will become the dominant trend in international trade in the future. According to the statistics of the Ministry of Commerce and the General Administration of Customs, the transaction scale of cross-border e-commerce in China was 6.7 trillion RMB in 2016, an increase of 24.1% year-on-year, and the CAGR reached 33.6% in 2012-2016. From 2017 to 2020, the cross-border e-commerce industry is expected to maintain an average annual compound growth rate of 15.7%, and will reach 12 trillion in 2020. The growth of cross-border e-commerce mainly comes from the substitution of traditional trade markets. From the perspective of the proportion of transactions in import and export trade, the penetration rate of cross-border e-commerce in China has increased year by year, from 4% in 2008 to 27.5% in 2016. It is expected to reach 37.6% by 2020. Cross-border trade e-commerce has changed the traditional international trade mode that only the production enterprises and foreign trade enterprises with import and export qualifications can engage in. It has had a tremendous impact on traditional business models and consumption patterns, and its status and role in economic and social development are increasingly Prominent, so it has developed rapidly in just a few years.

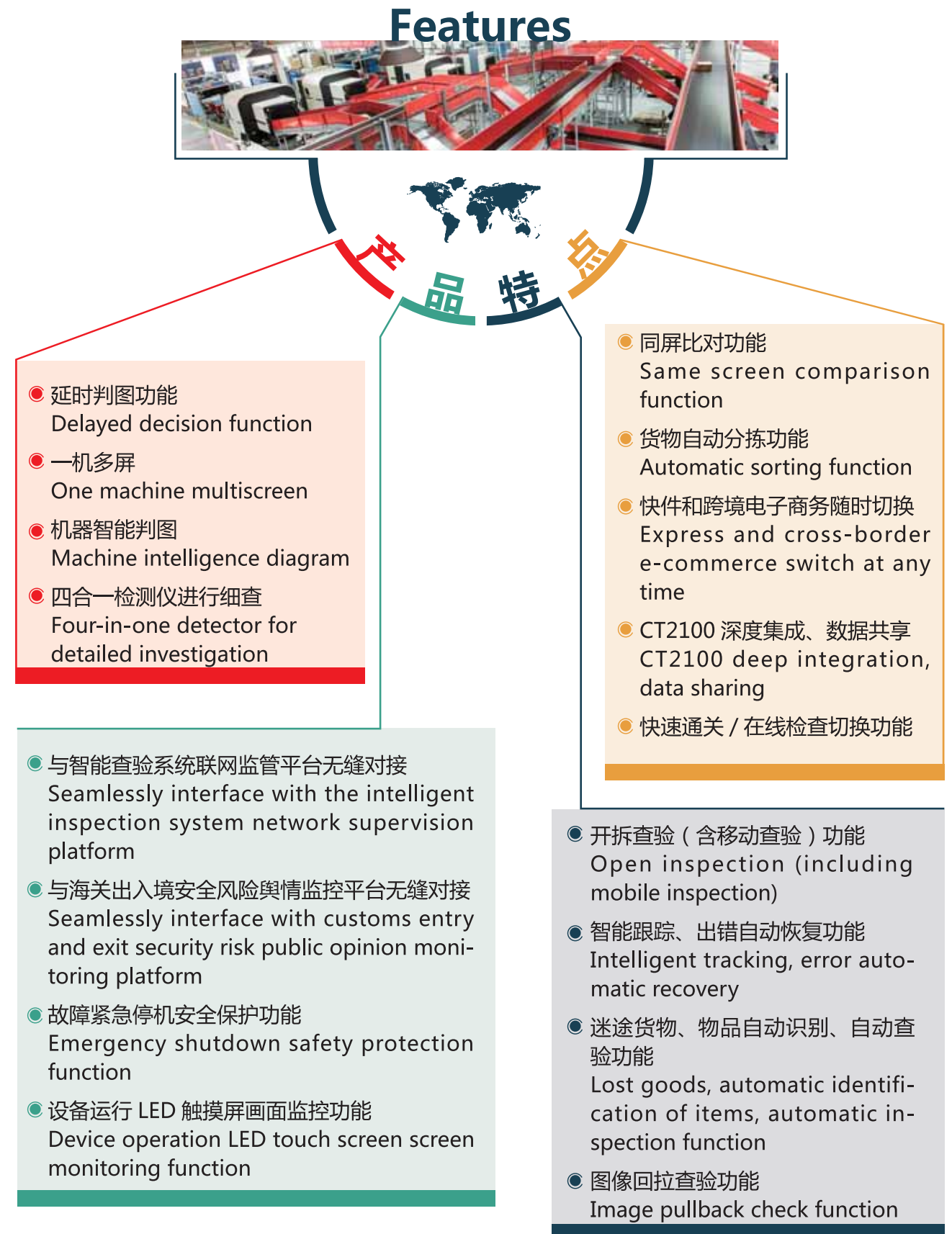
查验、通关业务流程图
Inspection and customs clearance business flow chart



通关模式查验流程详述图
Customs clearance mode inspection process detailed diagram



昌恒产品性能及特点
Changheng product performance and characteristics



昌恒海关专项著作权资质 Chang Heng Customs special copyright qualification



昌恒部分案例图展 Chang Heng case

